

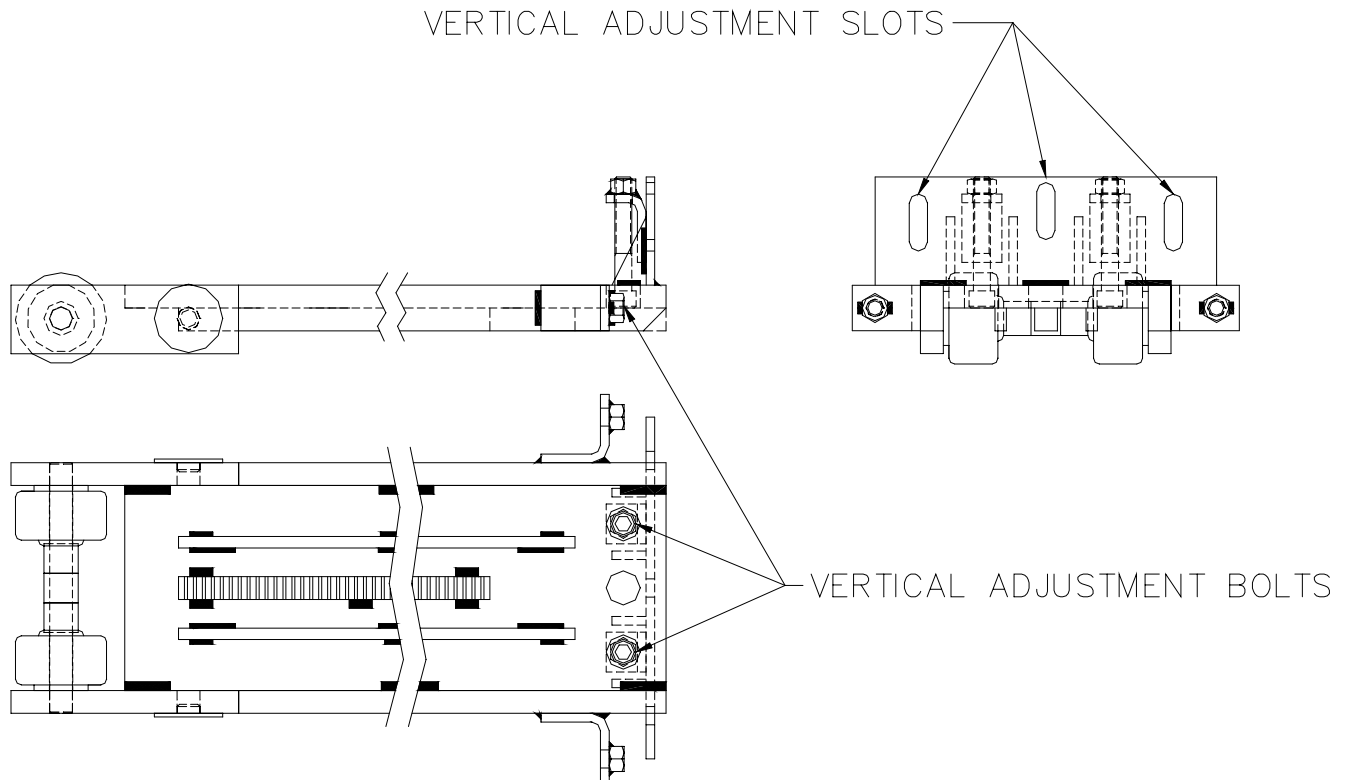


1217 E. 7th Street
Mishawaka, IN 46544
Phone: 1-800-334-4712
1-888-339-2539
Fax: 574-256-6743

T.I.P. Troubleshooting Information on Power Gear

VERTICAL HEIGHT ADJUSTMENT ON SLIDE-OUT SYSTEM

Each rail of the slide-out system has individual vertical height adjustment. Set the vertical height using the procedure shown below.



With the room extended completely adjust room height by-

1. Loosening the 3 bolts in the vertical adjustment slots.
2. Using the appropriate sized Allen head wrench, turn the vertical adjustment bolts either clockwise or counter-clockwise to raise or lower room (depending on the need).
3. Check room height setting. Repeat step 2 until height is set to proper location.
4. Tighten the 3 bolts in the vertical adjustment slots.